

ITTY BITTY BABY DRESS

A pattern made by Rae

This little dress is designed to fit a preemie or small newborn (about 7 pounds) right from birth. I have also included a template for a slightly larger baby.

MATERIALS:

- * ½ yard fabric
- * ready-made piping and bias tape
- * ¼ yard fabric for lining (optional)



INSTRUCTIONS:

1. Print out pattern templates, cut out, and tape together to make one pattern piece for the bodice of the dress.
2. Pin pattern to fabric, cut 4 of fabric (or 2 of fabric, 2 of lining). These four pieces will make the bodice (front and back) and two lining pieces (front and back). If you want the front and back to look different, cut the neckline of the back two pieces slightly higher than the front two.

Note: The bodice pattern is REALLY small – if you're not sure how big the baby will be, add an extra ¼ or ½ inch to the side seams or enlarge the pattern slightly.

3. Cut two rectangles, each 9" x 18." These are the skirt pieces.
4. With right sides together, sew the two skirt pieces together along the 9" sides with a ½" seam. Trim and iron open seams (fig 1).
5. Using a long stitch, sew around top edge of skirt ¼" away from the edge. Gather skirt.
6. With right sides together, sew bodice front to lining front **ONLY ALONG THE TOP EDGE** (translation: along the curvy side only) with a ¼" seam (fig 2). Clip seams at curves, turn inside out, press (fig 3). Repeat for bodice back and lining back.
7. With right sides together, sew front to back bodice. Turn right side out, press.
8. Sew piping to bodice by lining up raw edges on both piping and bodice pieces. Fold piping over at beginning as shown (fig 4).
9. Turn skirt inside out. Line up top of skirt with bottom of bodice (right sides should be facing). Gather skirt so that side seams match on bodice and skirt. Pin together; sew just outside of gathered seam.
10. Sew bias tape over bottom edge of skirt.

Copyright 2008 Rae Hoekstra
www.madebyrae.blogspot.com

All rights reserved. For personal use only.

DIAGRAMS:

Figure 1. Skirt pressed open



Figure 3. Bodice pressed right-side out

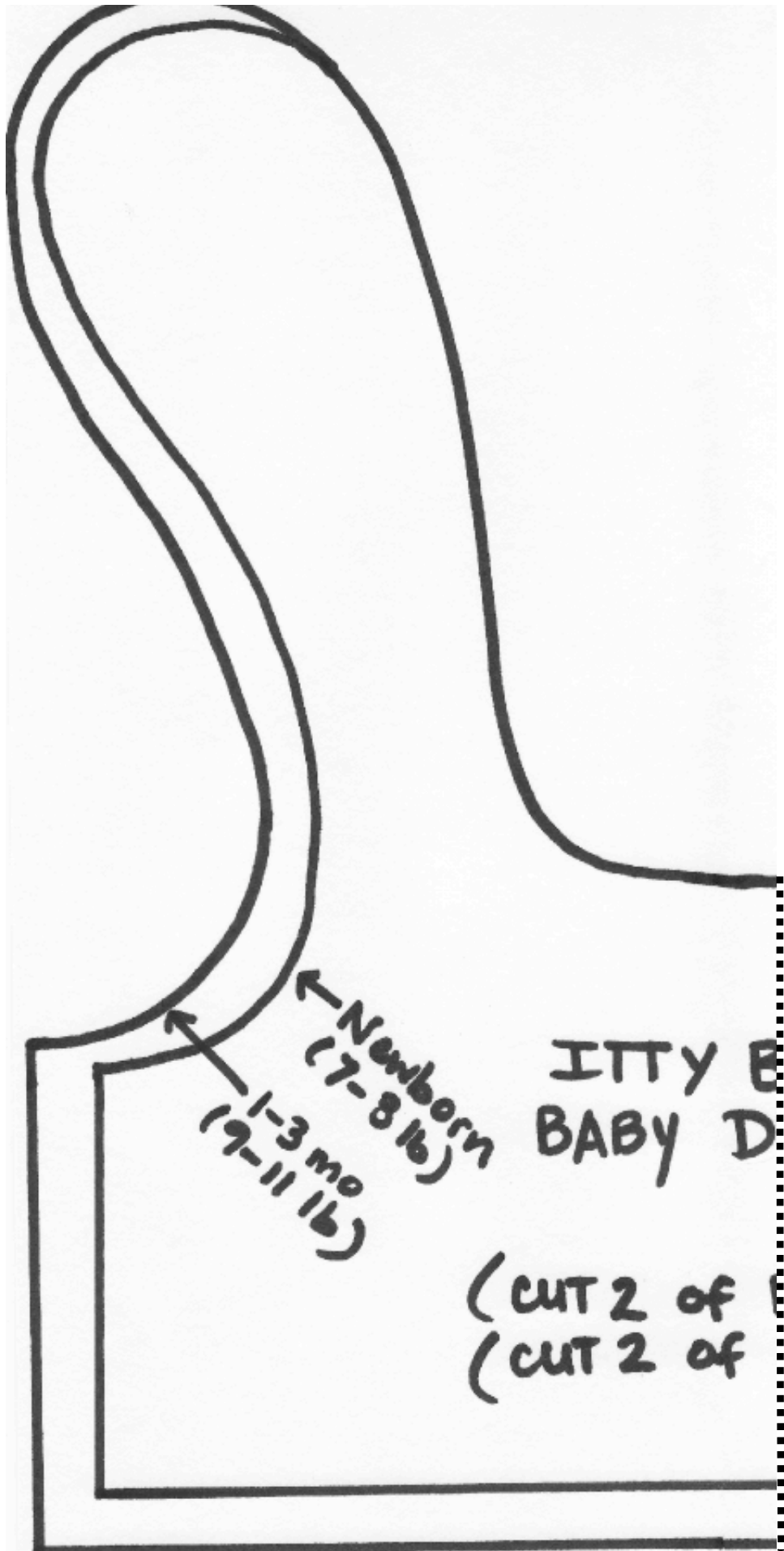


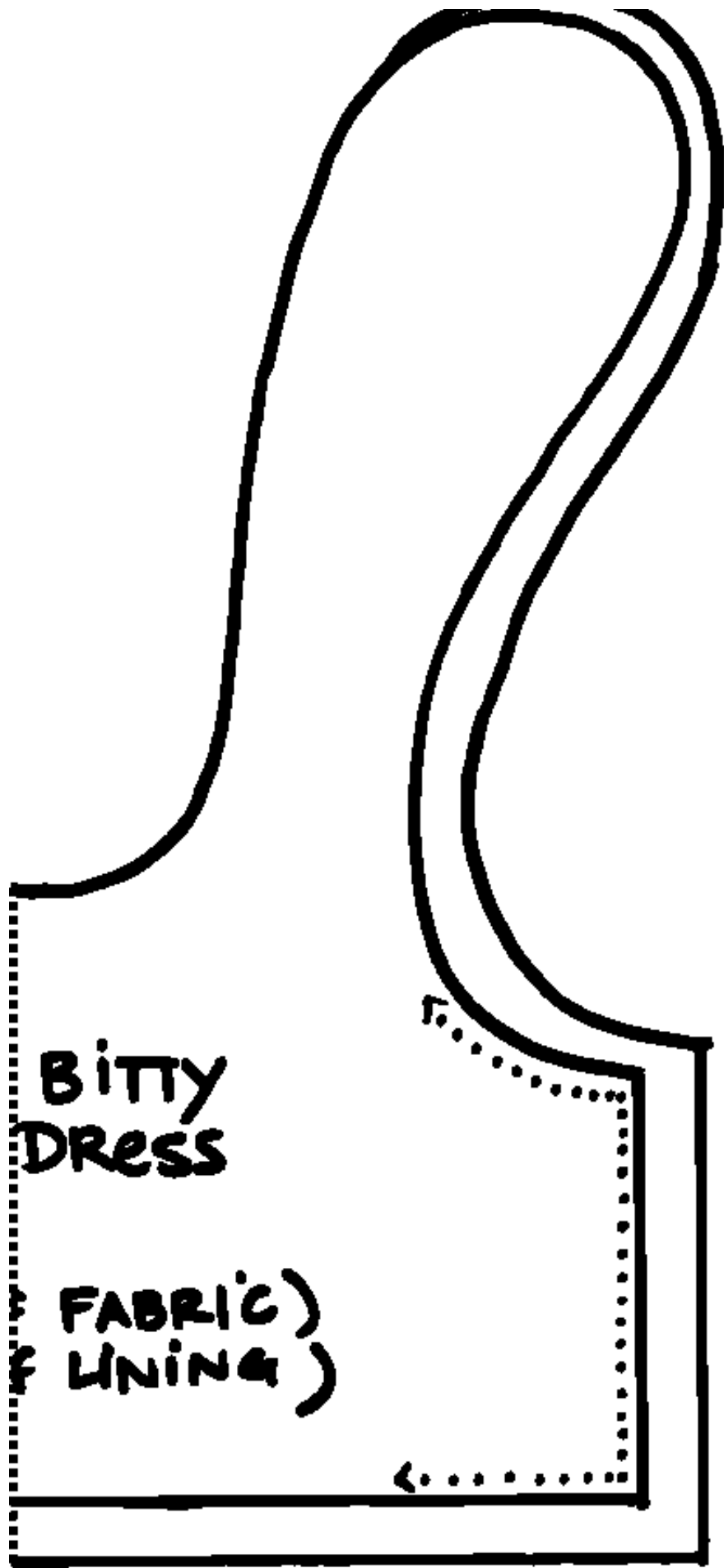
Figure 2. Bodice seam



Figure 4: Piping sewn on







BITTY
DRESS

FABRIC)
LINING)